

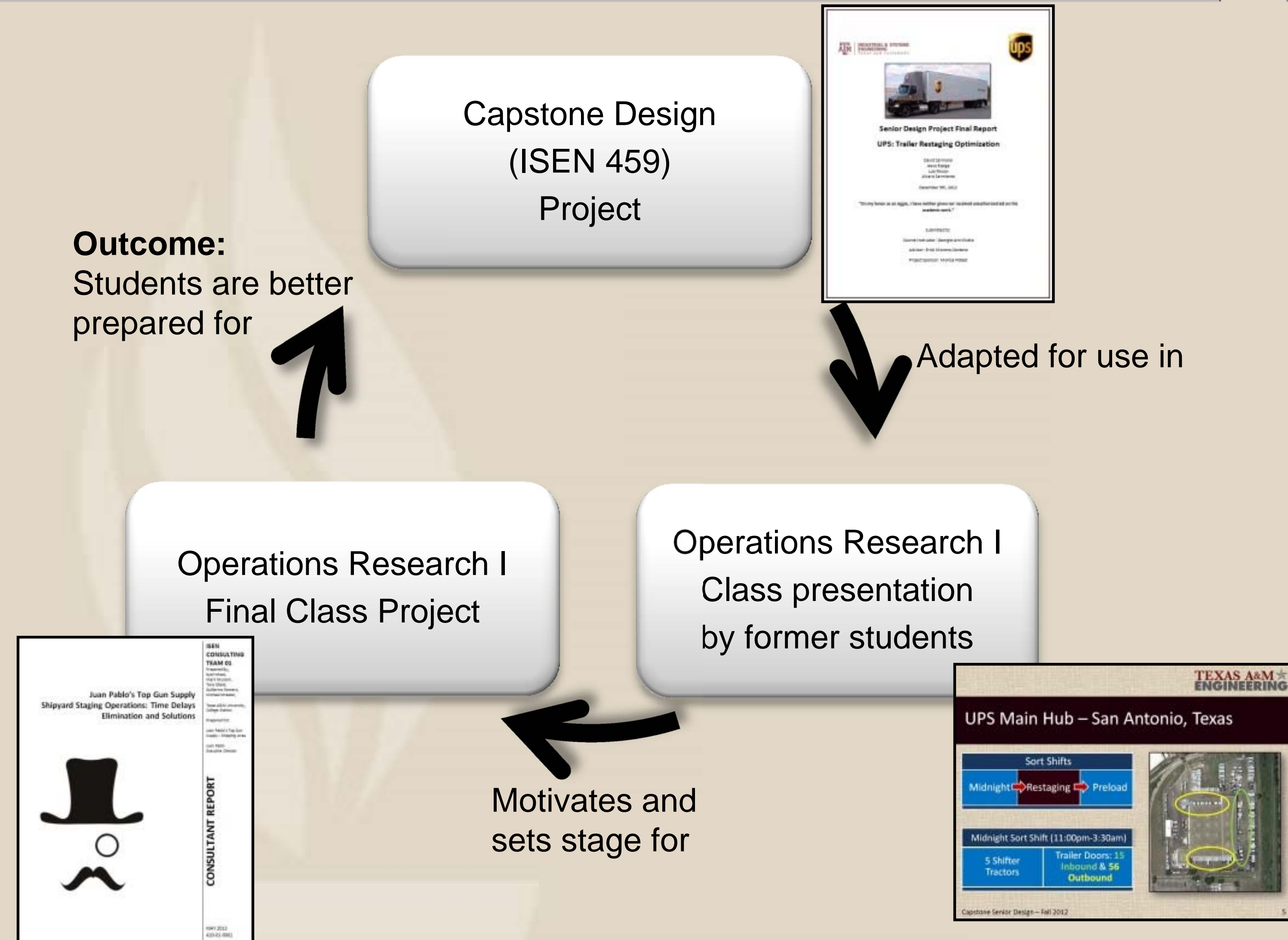


# Montague – CTE Scholar Erick Moreno-Centeno (2012-13) College of Engineering: Industrial Engineering



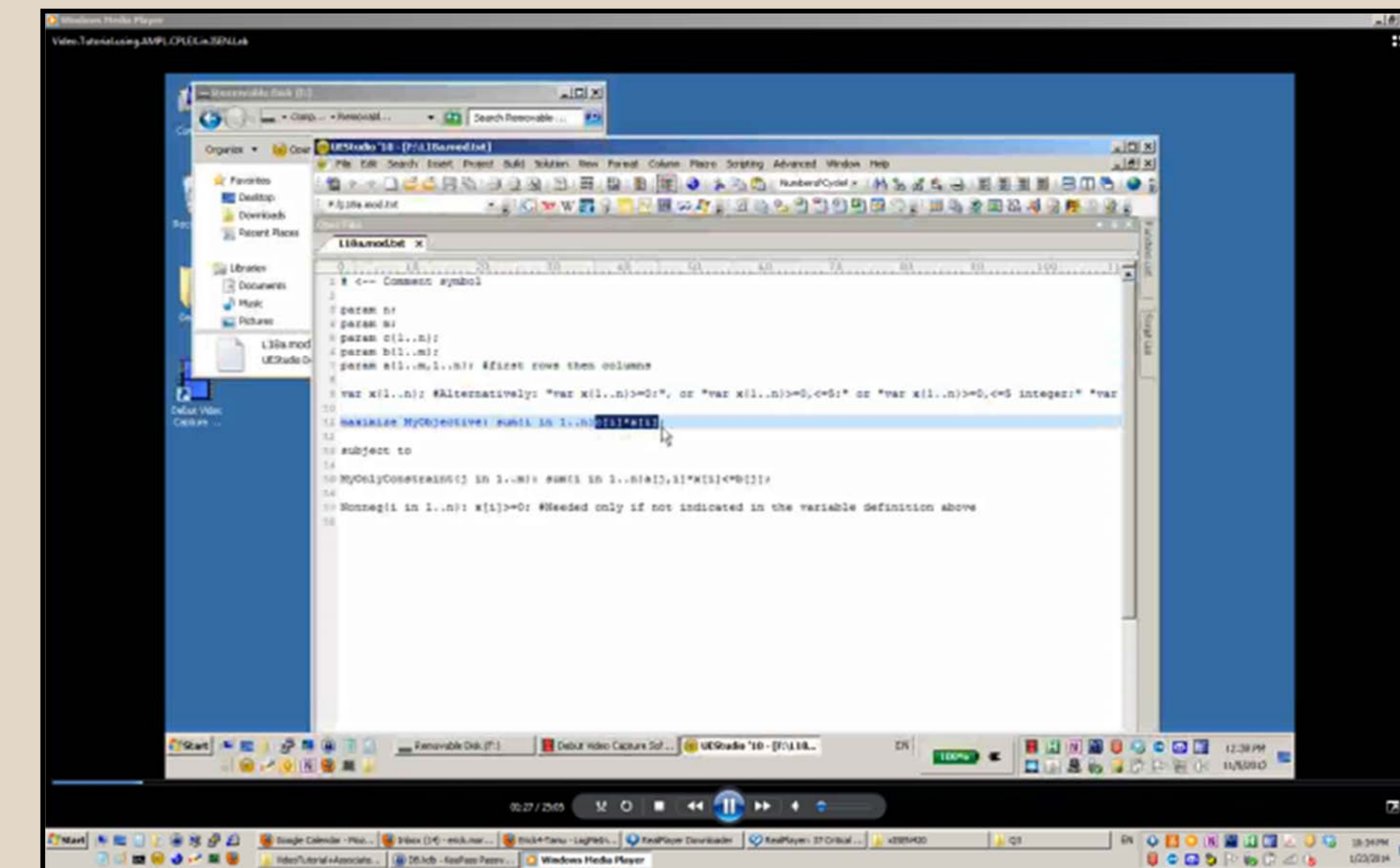
## Final projects on real-world problems

## Exercises combining video and software

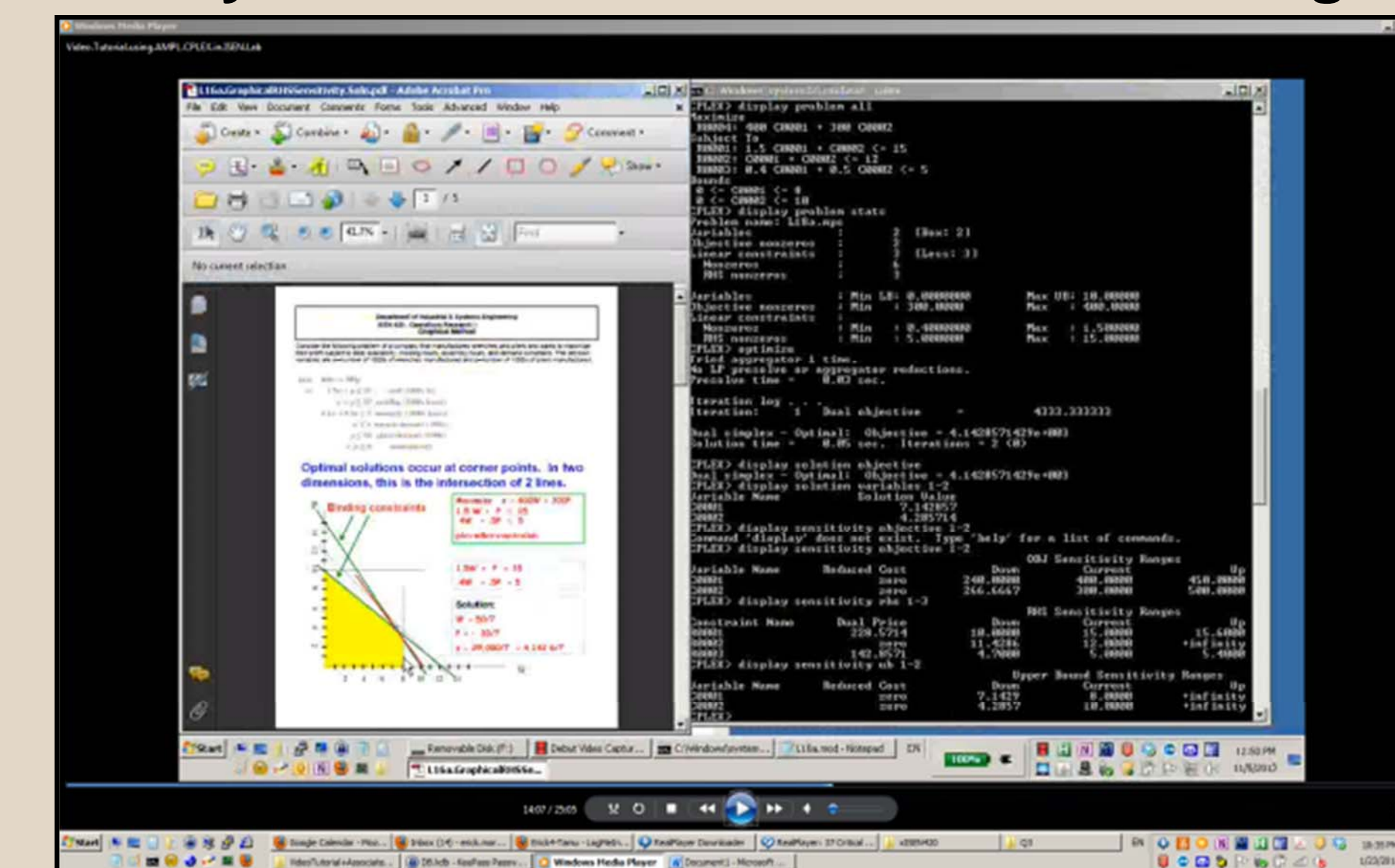


**Outcome:**  
Students are better prepared for

**Screen shot 1:** I explain line section by section the AMPL model file.



**Screen shot 2:** I explain how to get in CPLEX the same sensitivity information that the students obtained in class on a handout on the graphical method. In the video I place side by side the graphical information and analysis with the CPLEX instructions to get the same info.



## Acknowledgements



**Luis Rincon**  
Engineer Estimator  
Kiewit Energy Group  
Class of 2013

**Jesus A. Espiga**  
Piping Engineer  
VEPICA  
Class of 2013



I gratefully acknowledge the Montague-CTE scholars award program for providing funds used towards the purchase of a tablet computer, and student support enabling these educational enhancements.